



16+ TACOMA APEXG3N STEEL FRONT BUMPER INSTRUCTIONS

	<p>NOTICE</p> <p>Read instructions completely before installing this product. Refer back to the instructions frequently during installation.</p>		<p>CAUTION</p> <p>Flying Object Hazard. Fluid Splash Hazard.</p> <p>Wear safety glasses at all times when working on vehicle.</p>
---	---	--	--

	<p>WARNING: Cancer and Reproductive Harm - www.P65Warnings.ca.gov</p>
---	--

1. Remove grill.



2. Use painters tape to secure bumper templates to the body. Be sure templates are aligned with the body lines and level.



3. Unplug fog lights if applicable.

4. Remove fog light trim. The fog light trim is held in place by snaps.



AP-307446-INS

5. Extend bottom of cut template with painters tape



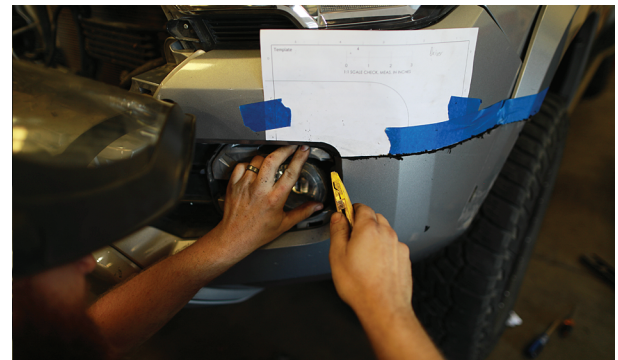
6. Mark around bumper mounting tab.
Do not cut this off. This tab will help secure the remaining bumper. Your cut line can be slightly lower than what is shown in the photo, but no higher.



7. Cut along line created by template and painters tape.



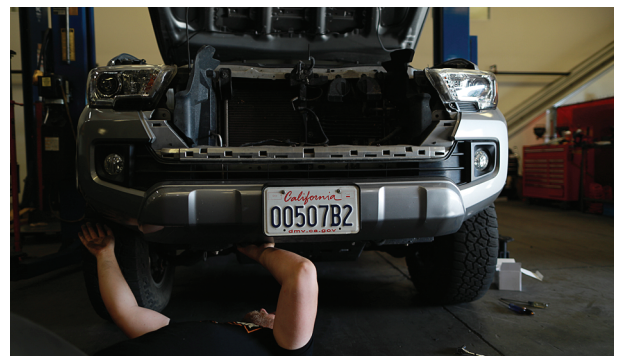
8. Cut around top of fog light using a utility knife.



9. Remove fender screws.



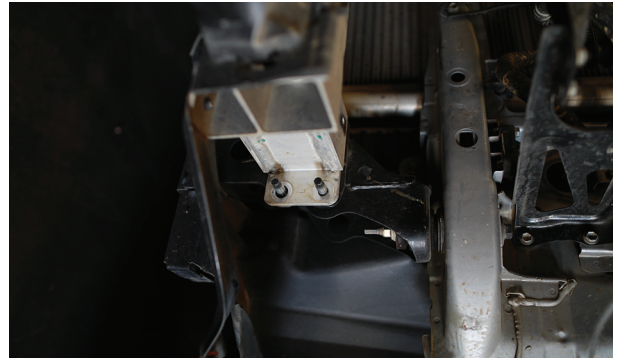
10. Remove clips and screws on lower portion of the bumper.



11. Carefully remove lower portion of bumper. If something seems to be hanging up investigate the issue and be careful not to cause any unnecessary damage.



12. Unbolt the bumper substructure.



13. Remove bumper sub structure. It may be necessary to use a mallet or pry bar to remove.



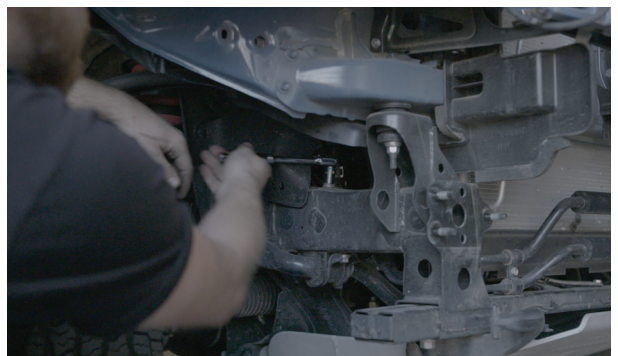
14. Cut inner fender wells.



15. Remove two bolts holding PS cooler in place.



16. Remove bolt holding PS cooler line in place behind the grill.



17. Reattach Ps cooler using provided relocation tabs, one on each side. Depending on application tabs may need to be slightly bent to prevent any rubbing against the frame or bumper. A pry bar can be used to bend the tabs up after installation.



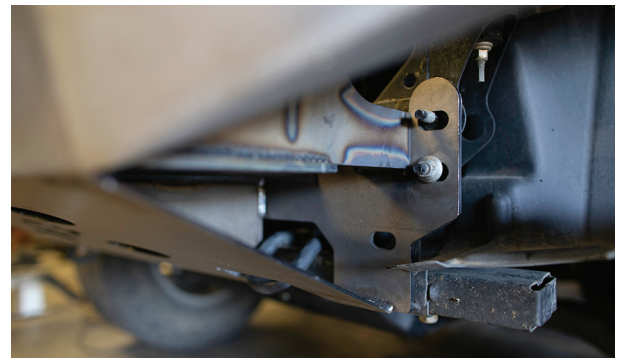
18. Remove tow hook bracket on passenger side.



19. Before installing new bumper you can apply painters tape to help prevent and damage to vehicle finish.

20. Reattach grill and plug in sensor (if applicable)

21. Slide bumper over bumper mounting bolts and install mounting nuts finger tight.



22. Reinstall these fender screws if you removed them to aid in bumper removal.



23. Center bumper with the body and tighten bumper mounting nuts. Reuse factory hardware.



24. Install supplied 1/2" bolts and hardware as shown. Extra washers will go under factory flanged nuts.

