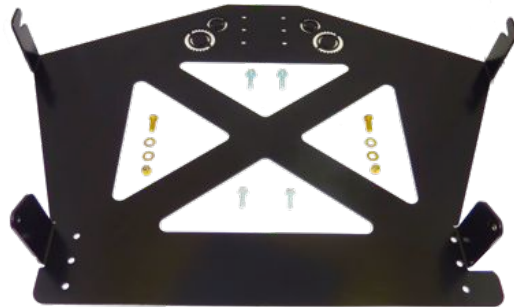


86-95 Suzuki Samurai Corbeau Safari Fold And Tumble Rear Seat Bracket Seat Kit (SKU# SIB-RSBR)



Instructions also Include: SKU# CS-SAF Corbeau Safari Reclining Fold & Tumble Bench Seat
SKU# CS-2SB-LB Corbeau Seat Belts

Installation Instructions



This Bracket Works **ONLY** with the Corbeau Seat shown

[Corbeau
Seat Belts](#)



[Corbeau Safari Reclining
Fold and Tumble Bench](#)



CAUTION: Safety glasses should be worn at all times when working with vehicles and related tools and equipment.



Suggested Tools:

- 12 mm Socket
- 14 mm Socket
- Ratchet
- 9/16 Socket
- 9/16 Box End Wrench
- Torque Wrench





Step 1

Fold the back of the seat forward by lifting up on the release handles and pushing the seat forward.



Step 2

Release the rear seat by lifting up on the latch.



Step 3

Fold the seat forward.



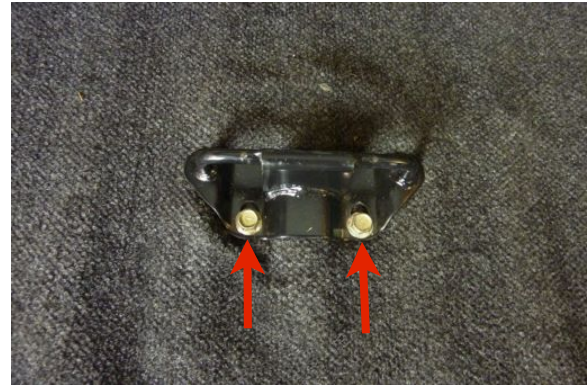
Step 4

Remove the (2) seat bolts using a 12 mm socket.



Step 5

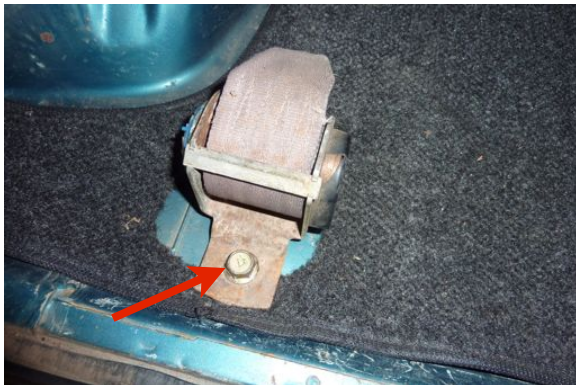
Lift out the rear seat out.



Step 6

Remove the rear seat latch by removing the (2) bolts using a 14 mm socket.

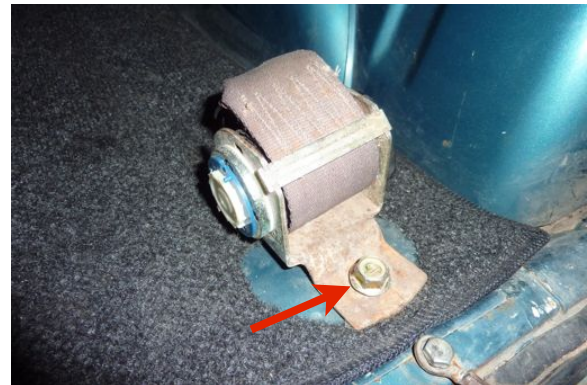
If you are reusing the original seat belts skip to **Step 9**



Step 7

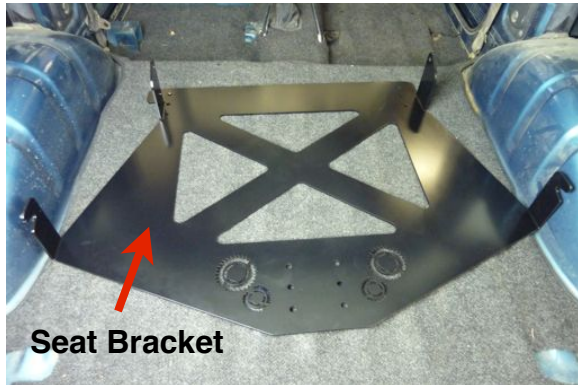
Remove the left rear seat belt using a 14 mm socket.

Note: The seat belt covers were missing on the Samurai we worked with. If the covers are still in place simply remove them to gain access to the bolts.



Step 8

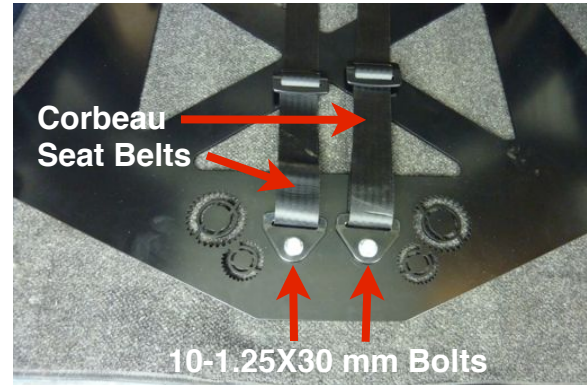
Remove the right seat belt using a 14 mm socket.



Step 9

Place the Low Range Off-Road seat bracket on the floor and align the holes in the bracket with the holes in the floor.

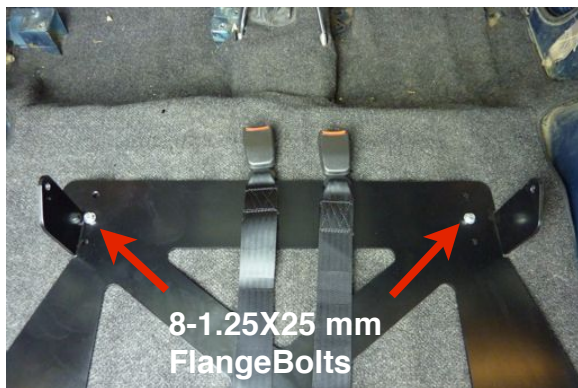
Note: Holes are drilled in the bracket such that it can be mounted in 3 different position, front-to-rear. You may chose which position fits your needs best.



Step 10

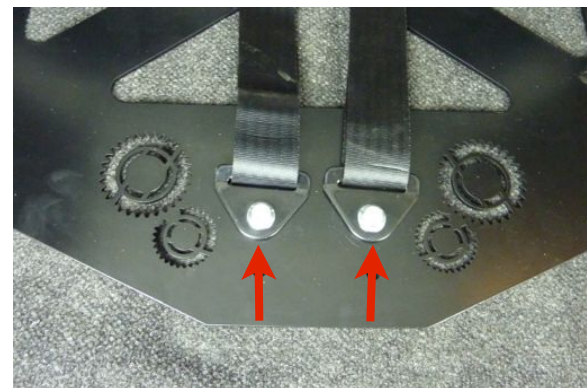
Position the seat belts as shown and install the (2) rear seat bracket bolts, but do not tighten them yet.

Note: If you are NOT using the Corbeau seat belt kit, simply remove the original seat belts from the original seat and install them in the same manner as shown.



Step 11

Install the front (2) bracket bolts and tighten them using a 12 mm socket. (15 ft. lbs.)



Step 12

Tighten the (2) rear bracket bolts with a 14 mm socket. (30 ft. lbs.)



Step 13

Place the seat belts as shown in preparation for setting the seat into position.



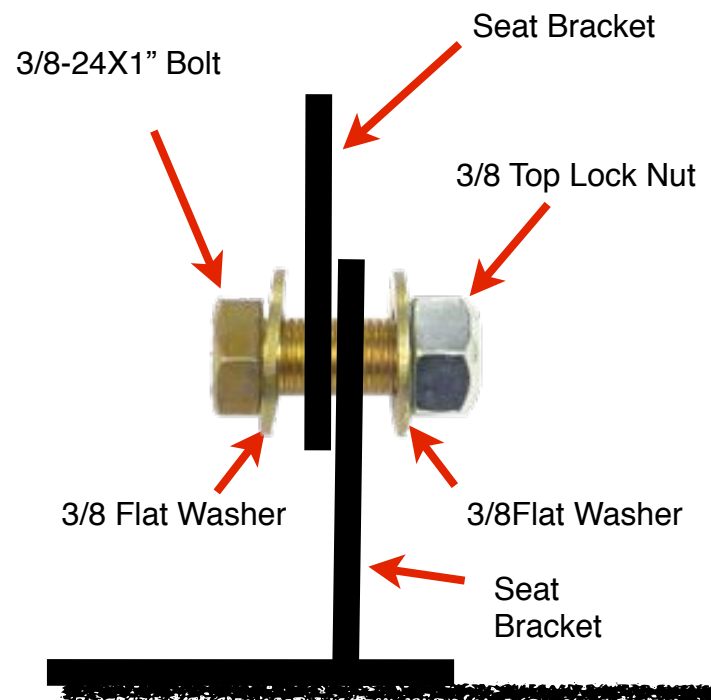
Step 14

Set in the Corbeau seat.



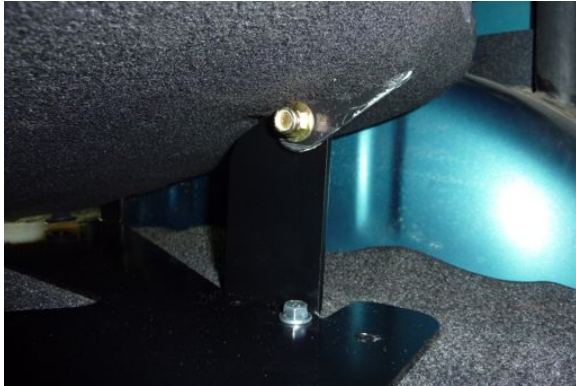
Step 15

Align the drivers side front mounting holes as shown.



Tech Tip

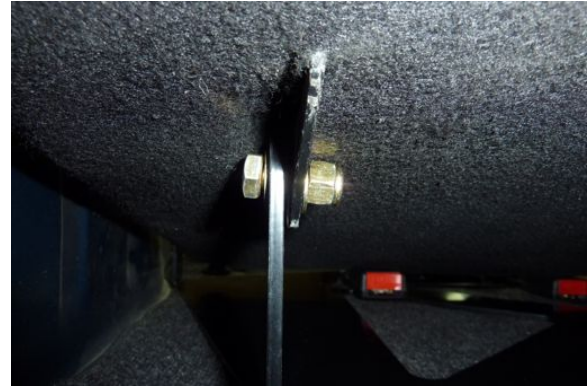
This shows the proper positioning of the fasteners to be used in the next step.



Step 16

Install the driver side fasteners and lightly tighten the nylock nut using a 9/16 socket and 9/16 end wrench.

Note: These fasteners should be left loose enough to act as a hinge, but tight enough to keep the nylock nut from working its way off the bolt.



Step 17

Install the passenger side fasteners as shown and lightly tighten the nut as indicated in the previous step.



Step 18

If you installed seat belts, slide the (2) seat belt buckles through the seat as shown.



Step 19

Install the driver side seat belt using the supplied bolt. Torque the bolt to 50 ft. lbs. using a 14 mm socket.



Step 20

Install the passenger side seat belt as shown using the supplied bolt and torque the bolt to 50 ft. lbs.



Step 21

Push the back of the seat rearward until it latches. Make sure the seat latches. It may be hard at first but will get better with time and use.

Note: Also, make sure the seat belts latch and unlatch properly.



Step 22

Congratulations! You have successfully installed your Corbeau rear seat. We hope these instructions have been helpful. If you have suggestions on how we could improve our instructions, please contact us and share your ideas. Our contact information is at the bottom of each page.



As always, If you experience any difficulty during the installation of this product please contact Low Range Off-Road Technical Support at 801-805-6644 M-F 8am-5pm MST. Thank you for purchasing from Low Range Off-Road.



These instructions are designed as a general installation guide. Installation of many Low Range Off-Road products require specialized skills such as metal fabrication, welding and mechanical trouble shooting. If you have any questions or are unsure about how to proceed, please contact our shop at 801-805-6644 or seek help from a competent fabricator. Using fabrication tools such as welders, torches and grinders can cause serious bodily harm and death. Please operate equipment carefully and observe proper safety procedures.

Rock crawling and off-road driving are inherently dangerous activities. Some modifications will adversely affect the on-road handling characteristics of your vehicle. All products sold by Low Range Off-Road are sold for off road use only. Any other use or application is the responsibility of the purchaser and/or user. Some modifications and installation of certain aftermarket parts may under certain circumstances void your original dealer warranty. Modification of your vehicle may create dangerous conditions, which could cause roll-overs resulting in serious bodily injury or death. Buyers and users of these products hereby expressly assume all risks associated with any such modifications and use.

Revised 02/07/13© Copyright 2013 Low Range Off-Road, LC All Rights Reserved

