



CHEVY COLORADO SHORT BED MODULAR PACK RACK INSALLATION INSTRUCTIONS

	NOTICE Read instructions completely before installing this product. Refer back to the instructions frequently during installation.		CAUTION Flying Object Hazard. Fluid Splash Hazard. Wear safety glasses at all times when working on vehicle.
WARNING: Cancer and Reproductive Harm - www.P65Warnings.ca.gov			

Before Install:

You will need to cut open the top of the stake pockets closest to the cab if they were not exposed yet. There could be some plastic plugs that will need to be removed as well that block the hole that connects the stake pockets to the inside of the bed.

1. Gather the stake pocket anchor sand hardware as shown above.



AP-308505-INS



2. Using one bolt on the top of the bracket to help hold it. Thread the lower bolt with a fender and lock washer as shown. Make this only finger tight for now.



3. Remove the bolt that was used to help position the bracket. Make sure the top of the bracket is not protruding above the bed sides. Repeat steps 2-3 on the rest of the stake pockets.



4. Place the driver side bed rail as shown. Use clamps as shown to help position the bed rail. Insert the bolts with a flat and lock washer and position as centered as possible between the bed rail's saddles. You may have to loosen the lower bolt to get the proper position.

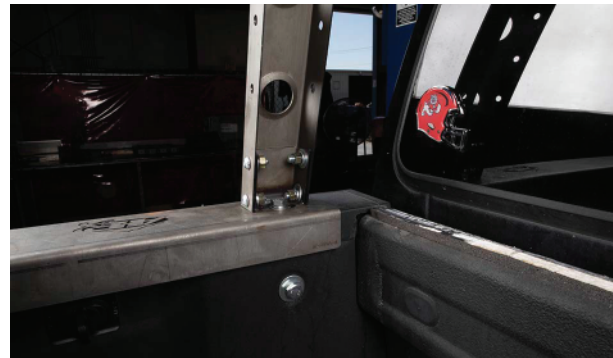




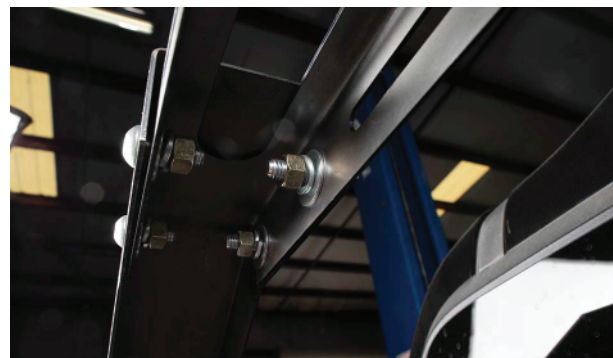
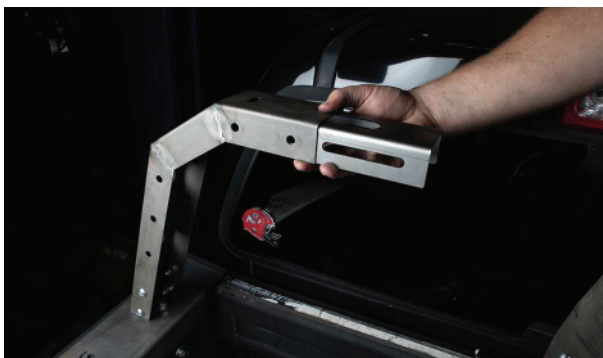
5. Once you have the bolts in the proper positions, begin by tightening the lower bolt first then tighten the top bolt. When everything is tightened down the bracket should sit flush against the top of the bed side. Repeat steps 4 and 5 on the passenger side.



6. Using the hardware shown begin installing the vertical brackets on the saddles closest to the cab on both the driver and passenger sides. The install the button head screws and corresponding hardware as shown below. Leave them finger tight for now.

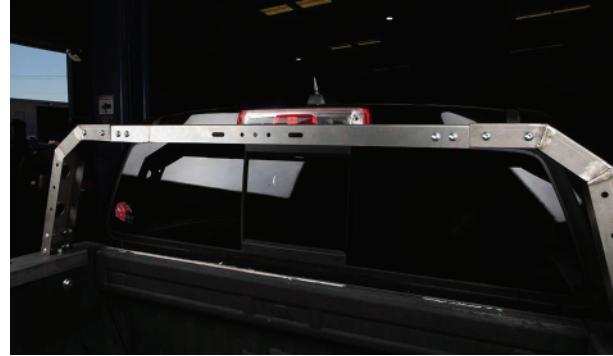


7. Install the connector brackets in the orientation shown above. Use the same set of hardware to attach the vertical brackets and leave them finger tight for now. Do this on both sides.





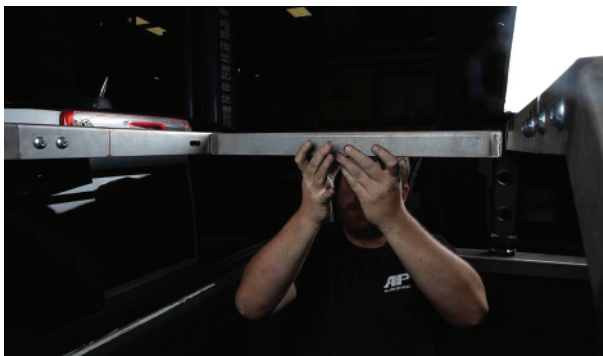
8. Drop in the crossbar on top of the connecting brackets and attach using the same hardware sets. Leave the hardware finger tight for now.



9. Use a long straight piece of material and clamp it to the top of the crossbeam assembly to align all of the parts together. Then tighten all hardware of this assembly. Repeat steps 6 through 9 for the next two crossbeam assemblies.



10. Using the hex head screws, corresponding lock and flat washers, and hex nuts. Install the boxed cross bar in the center of the main crossbeam assemblies as shown. Tighten down the hardware at this time. Repeat this between the next set of crossbeams.





951-658-7077 | 5356 E. Pine Ave Fresno, CA 93711



11. Install the next set of boxed cross bars using the same hardware where desired. Shown below they are installed on the rear and lowest positions available.



Congratulations you have installed the All Pro Off-Road Modular Pack Rack!

