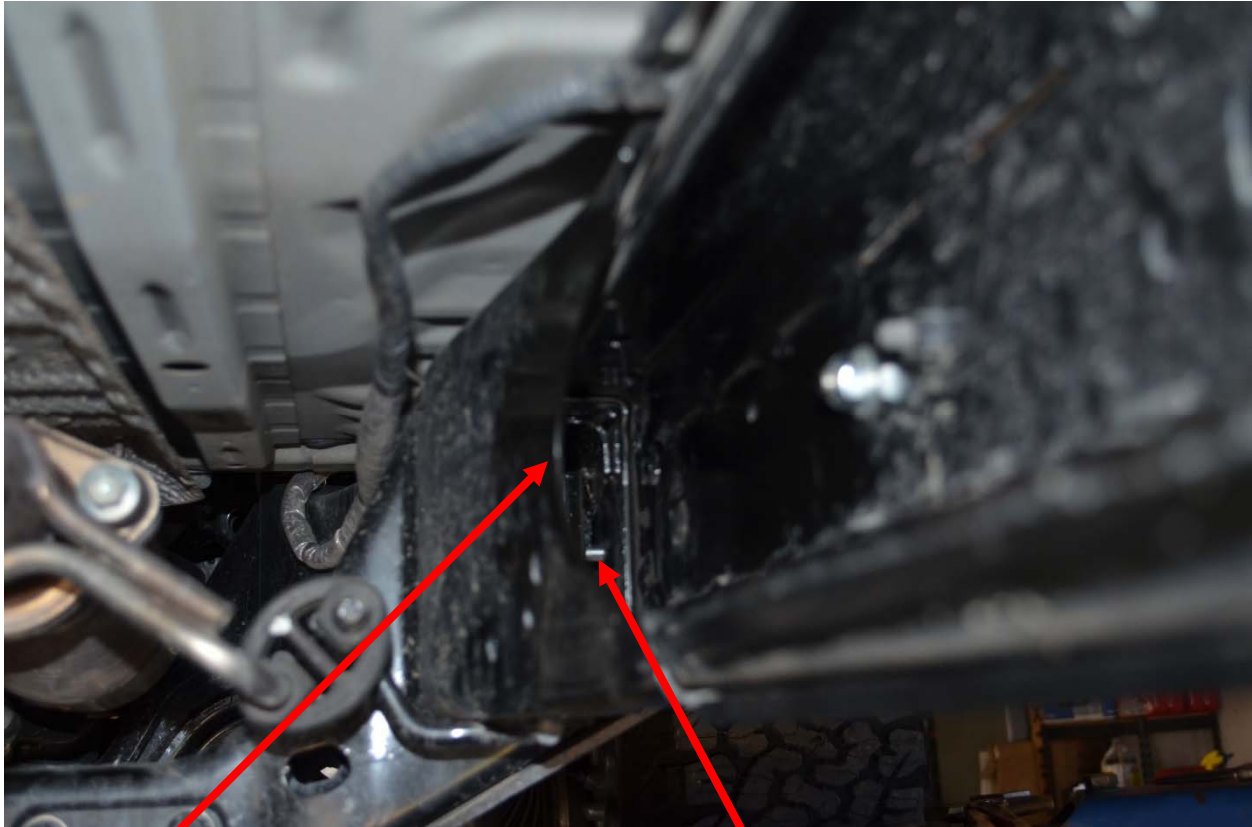


## All-Pro Off Road 2016 Tacoma Slider Install Guide

### MOUNTING TO FRAME USING NUT PLATES:

In order to mount the slider to the frame, existing through holes in the frame are utilized. Nut plates are used to attach the front two bolts to the side of the frame. To position nut plate, stick arm inside frame cutout and hold nut plate in place while threading the bolt through the slider mounting plate.

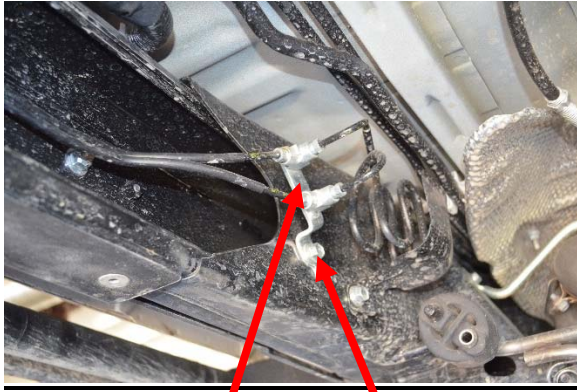


Frame Cutout

Front most bolt threaded through nut plate by holding plate in position via the frame cutout



For driver side, brake line bracket must be unbolted, and brake lines must be moved to the side in order to get an arm inside the frame cutout. After the two nut plates are in place and bolts tightened down, re-install brake line bracket to its original hole and position.



Brake Line Bracket Bolt to remove



Bracket and lines moved in order to allow installers arm to fit into frame cutout

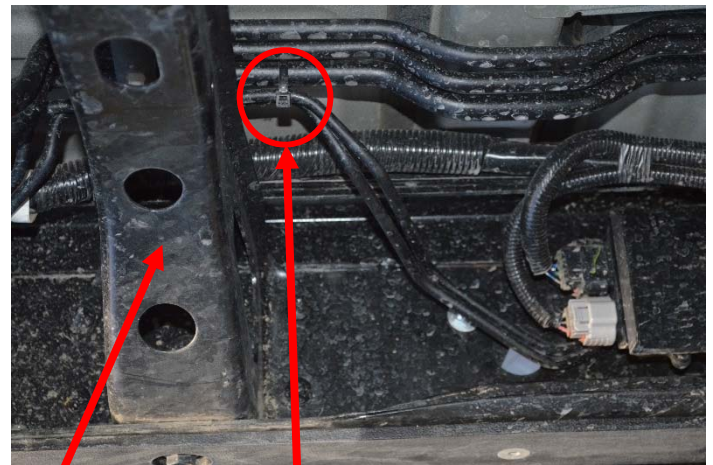
### **DRIVER SIDE BRAKE LINE MANAGEMENT:**

Some holes originally used to attach clips to the frame which hold the brake lines will now be used to mount sliders to the frame. Although brake lines will most likely not shift position due to their rigidity, it is recommended to zip tie them to other lines in front and behind the frame cross member to guarantee they will not shift.



← BED

Zip tie placement to the rear of the cross member.



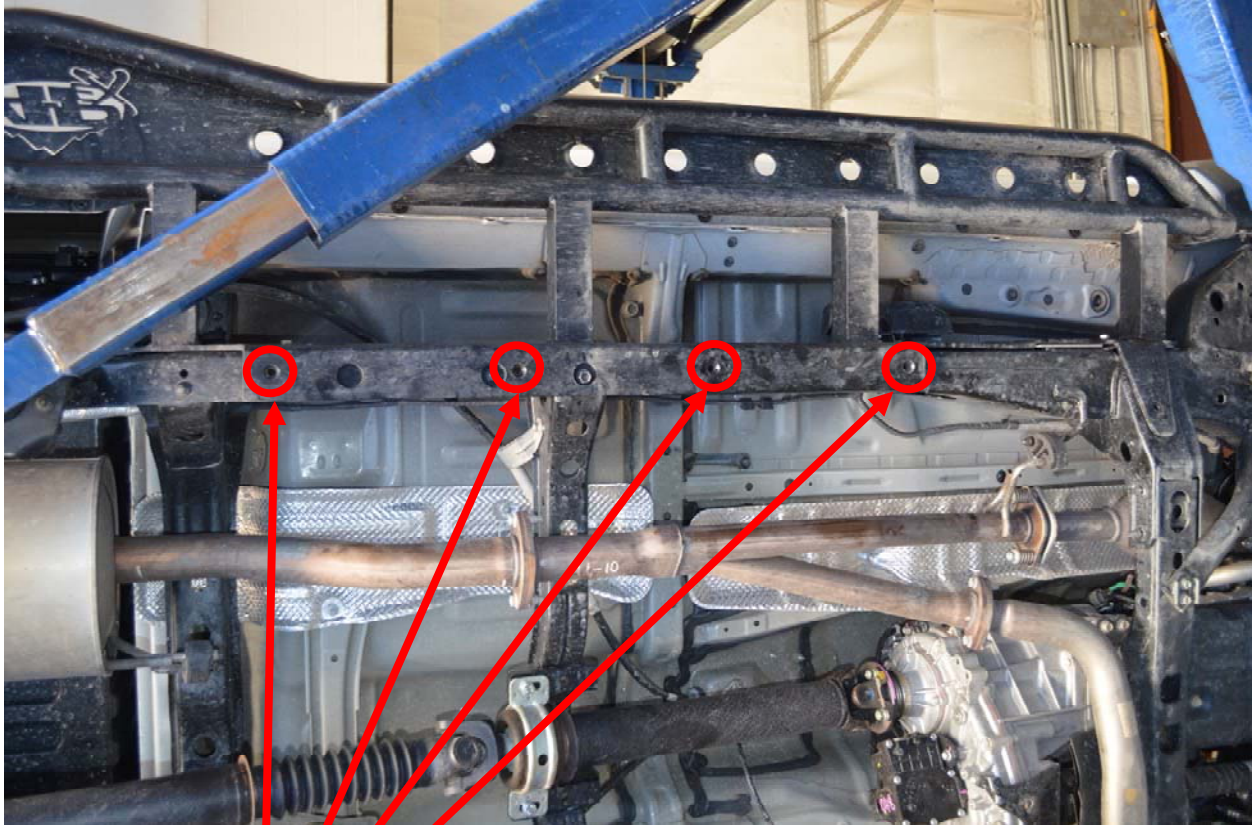
CAB →

Zip tie placement to the front of the cross member.

Frame Cross Member

### DRILLING MOUNTING HOLES:

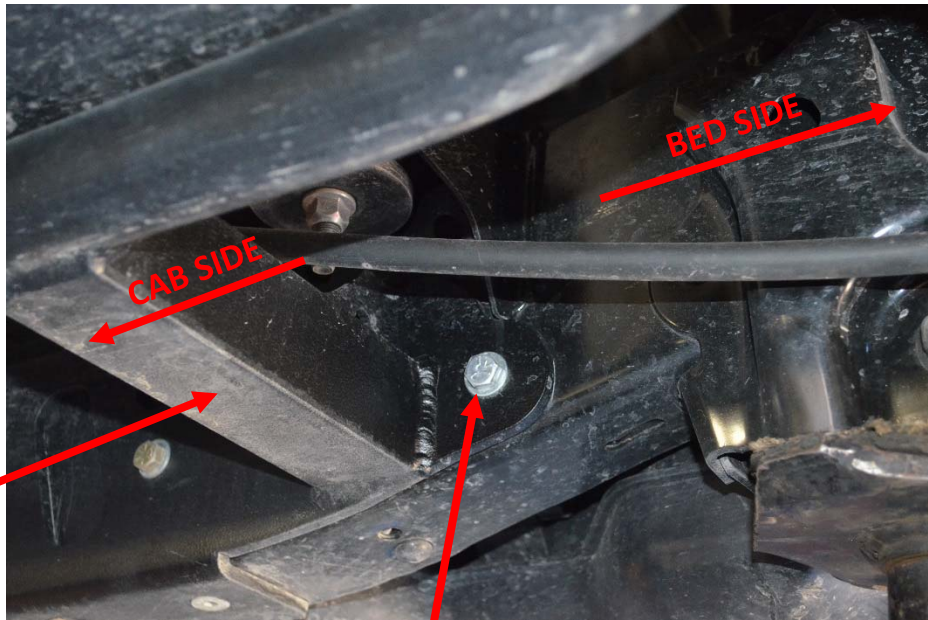
In order to install the sliders, five through holes need to be drilled on passenger and driver side of the frame to securely attach sliders to frame. To do this, attach sliders to the frame using side mounting holes. Make sure sliders are tightened and in the proper position before marking holes to be drilled into the bottom of the frame. After marking and center punching each hole location, use a 7/16" drill bit to drill out the clearance holes.



Use 7/16" drill bit at these four locations on the bottom of the frame on both driver and passenger side.



One more hole needs to be drilled in the side of the frame on both passenger and driver side in order to install sliders. This hole is for the most rear bolt holding the slider to the side of the frame. Use the same 7/16" drill bit in order to drill out the clearance hole for this bolt.

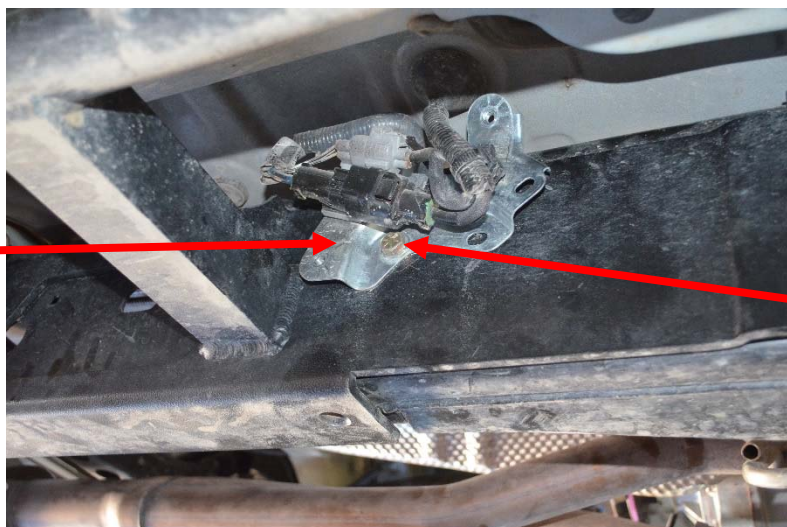


Bolt inserted in to hole drilled using 7/16" bit.

### **Passenger Side Wire Connection Box:**

For the slider to fit properly, the wire connection box on the passenger side of the frame must be trimmed and clearanced, as well as moved over to avoid the slider leg. First, remove plastic cover from bracket holding the wire connectors. The bracket is connected to the frame using two bolts. In order for this bracket to fit with the new All-Pro sliders, the bracket must be slid over so the left bolt hole in the bracket aligns with the right hole in the frame; only one bolt will be used now.

Wire connector bracket, note here how left most bolt hole is used with right most hole in frame, only the left most hole in the bracket is used now with one bolt.



Bolt used to mount bracket to slider and frame.

Once the bracket is shifted toward the cab side of the vehicle, clearancing the plastic cover which bolts on top of bracket is required. This plastic cover must be clearanced in two places in order to fit properly. A grinder, box cutter, or small handsaw can be used to cut the plastic cover



Bottom left corner is trimmed away in order to fit around leg of slider.



Cut out on top of plastic cover must be trimmed opened more on right side.

