

All-Pro Off road, Inc '07+ IFS Skid Install

Estimated Installation Time: 1 hour or less

Installation Difficulty: Easy

Tools Needed: Ratcheting Wrench with 12mm, 13mm, and 14mm socket – may need WD40 and 8x1.25mm tap

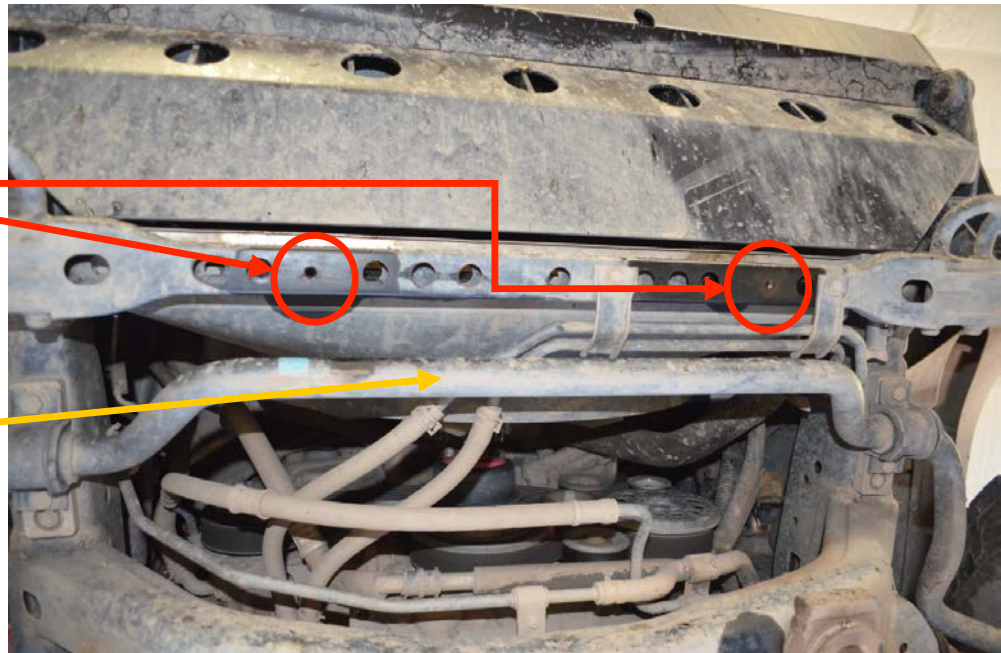
Step 1: Remove stock skid plates from the vehicle using the 12mm socket and wrench. There are two separate plates, each plate has four, 8x1.25mm bolts holding it to the frame. If installing a steel IFS Skid plate, save these bolts as they will be reused when mounting the IFS Skid. If installing an aluminum APEX IFS Skid, 6 grade 8.8 bolts will be sent with the kit.

Step 2: The new APEX IFS skid plate will mount to 6 stock holes in the vehicle. Prepping of these holes may be necessary depending on age of the vehicle and where the vehicle is located geographically. To prep holes, first spray liberally with WD40. Try and thread in one bolts. If the bolt goes in easily, proceed with install, if not, re-tapping of the weld nuts in the frame may be necessary to clean the threads.

- **NOTE:** If tapping, make sure tap is going into hole straight, lots of lubricant is used, and make a few turns to the right, then turn left to break chips. Following these tips will help prevent the tap from breaking off in the frame.

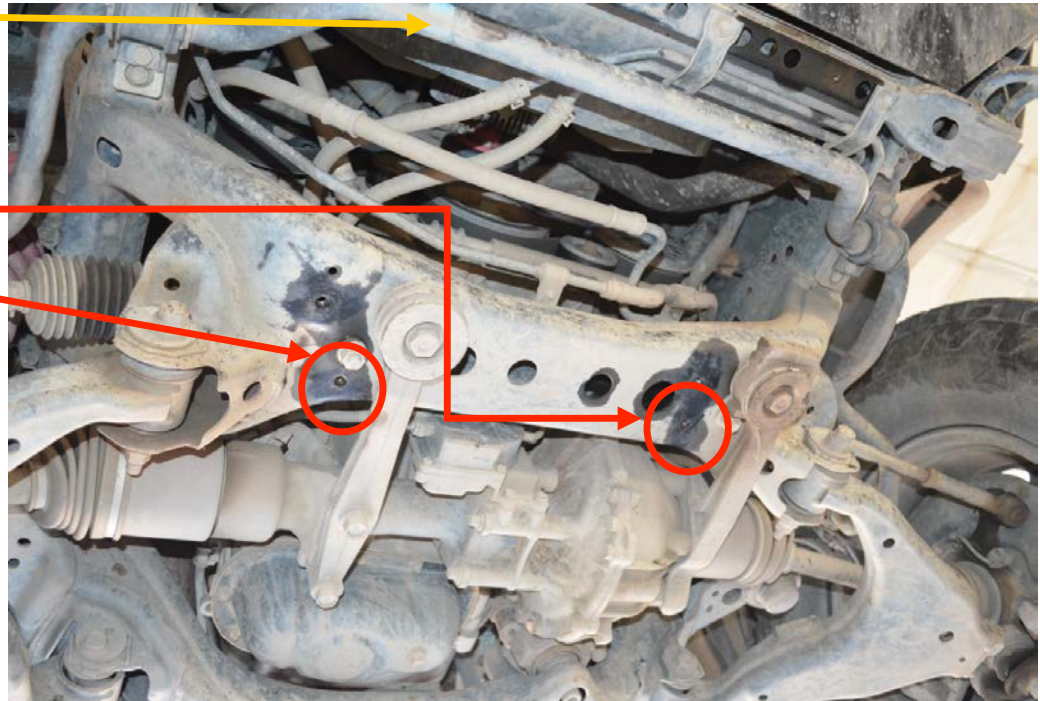
Two front IFS Skid mounting holes cleaned and re-tapped

Front Sway-Bar



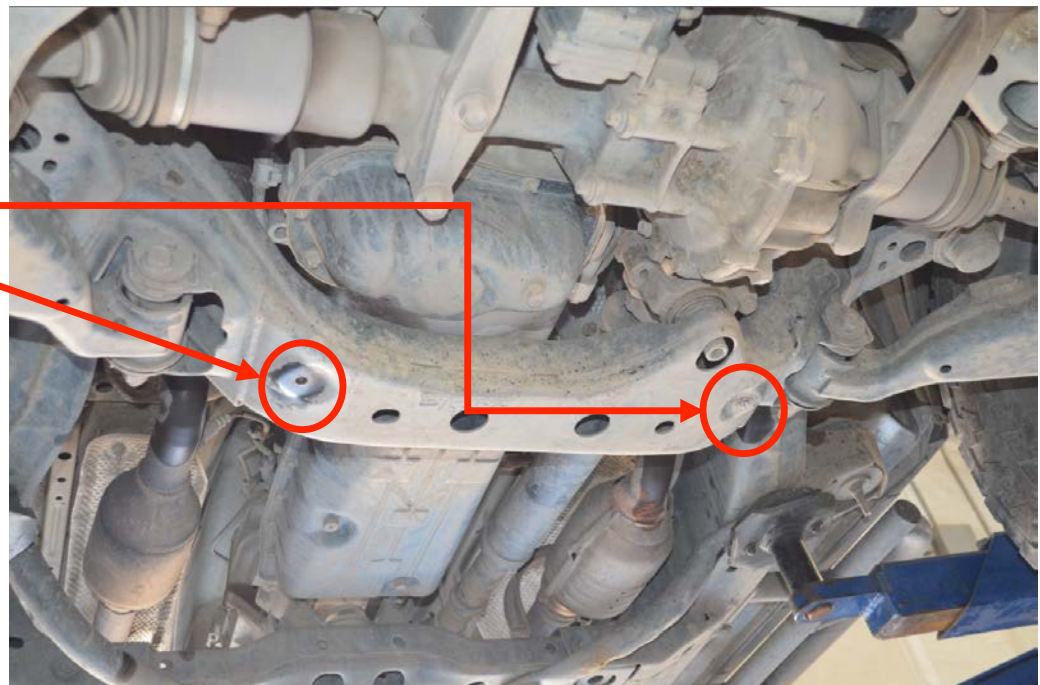
Front Sway-Bar

Two middle IFS Skid mounting holes cleaned and re-tapped



Front of Vehicle

Two rear IFS Skid mounting holes cleaned and re-tapped



Step 3: Once the new hardware threads easily and freely into the stock holes, it is time to install the skid. To do so, hold the skid in place (a friend may be helpful at this point) and try to thread one front bolt and one rear bolt to hold the skid in place. Then, thread remaining four bolts. Once it is verified that all the holes in the skid line up with the holes in the vehicle and all bolts thread, tighten all six bolts down using the 13mm socket and wrench. Note that the two longer supplied bolts must be used in the middle two holes.

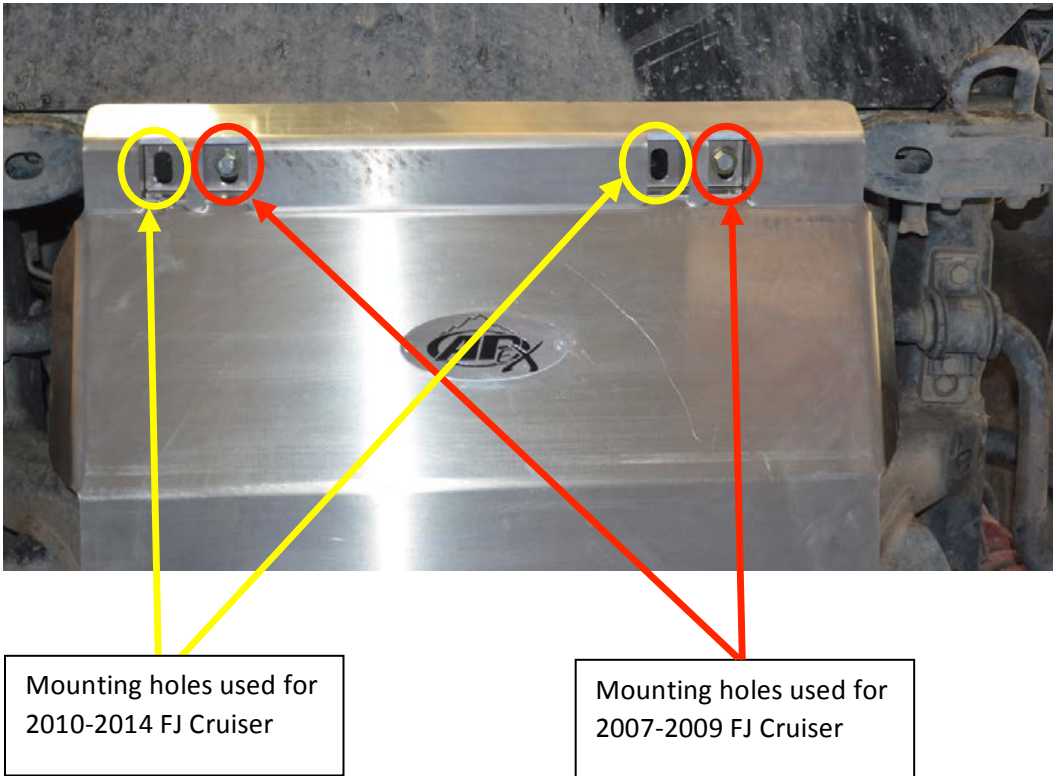


INSTALLATION NOTES:

- If installing an IFS APEX Skid on a 2010+ vehicle, a steel spacer block will be provided and it needs to be placed in between the frame and the skid in the middle bolt hole location.



- If vehicle is 07-09, use the driver side holes in the front of the IFS Skid. If the vehicle is 10-14, use the passenger side holes.



- When installing on 2010+ vehicles, two stock brackets will need to be removed in order for skid to fit. Keep the 14mm bolts from removing this bracket, re-use these bolts to attach APEX skid plate to stock holes used originally for this bracket.

